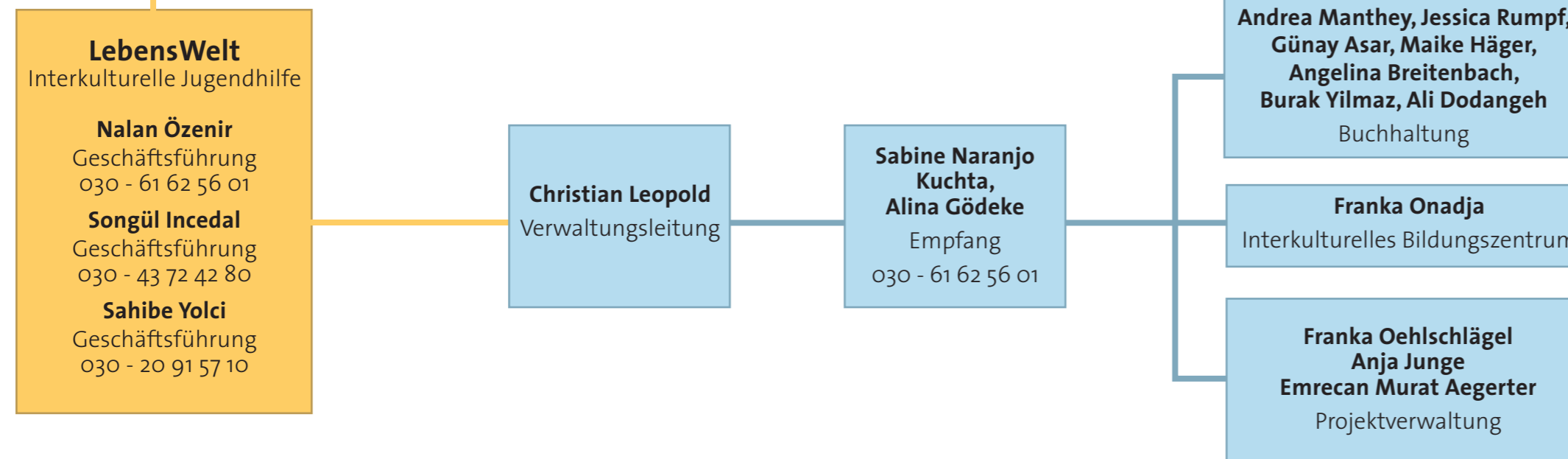




Zentrale Verwaltung

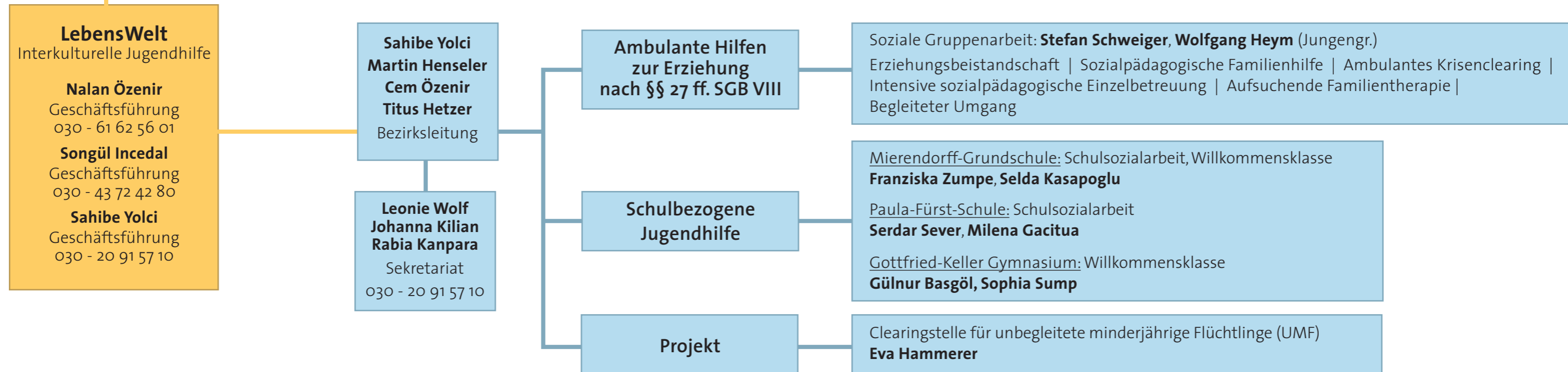
Ollenhauerstr. 127 | 13403 Berlin





Standort Charlottenburg-Wilmersdorf

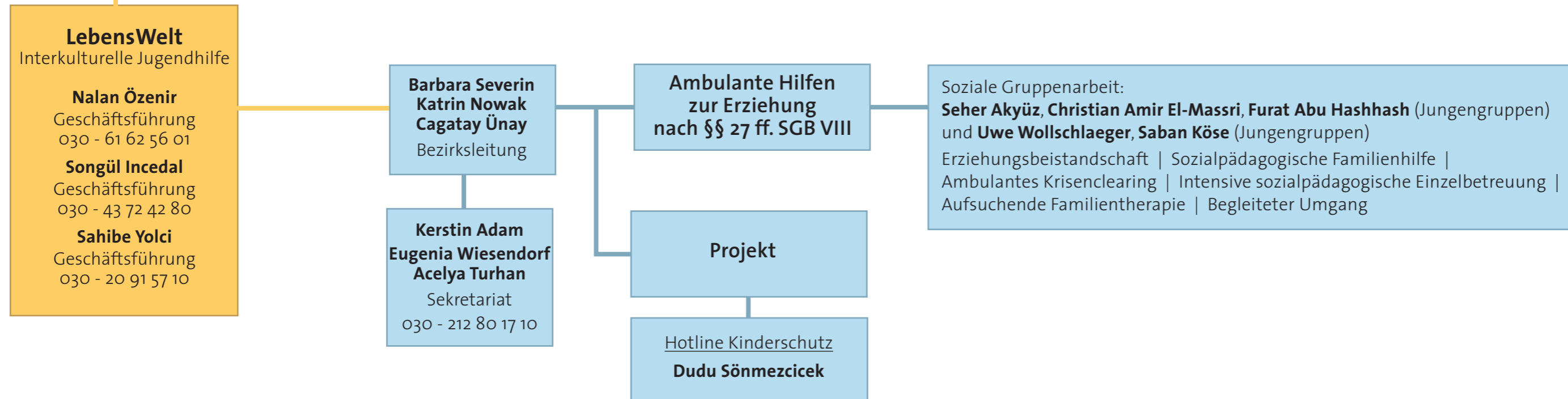
Otto-Suhr-Allee 97 | 10585 Berlin





Standort Friedrichshain-Kreuzberg

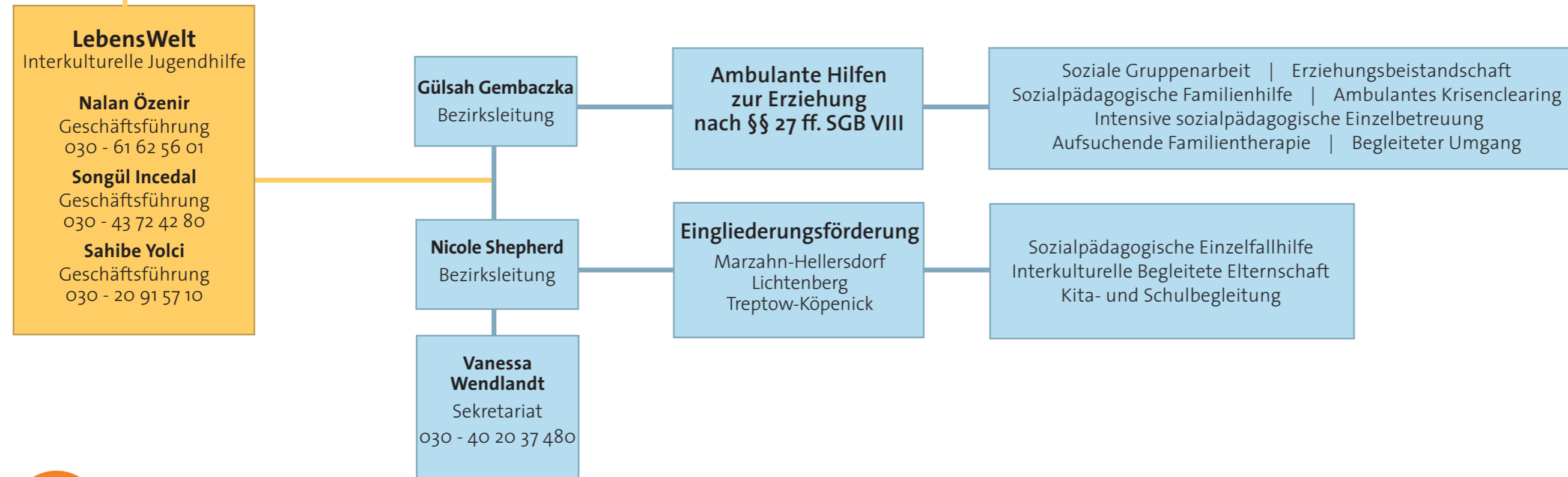
Tempelhofer Ufer 16 | 10963 Berlin





Standort Marzahn-Hellersdorf

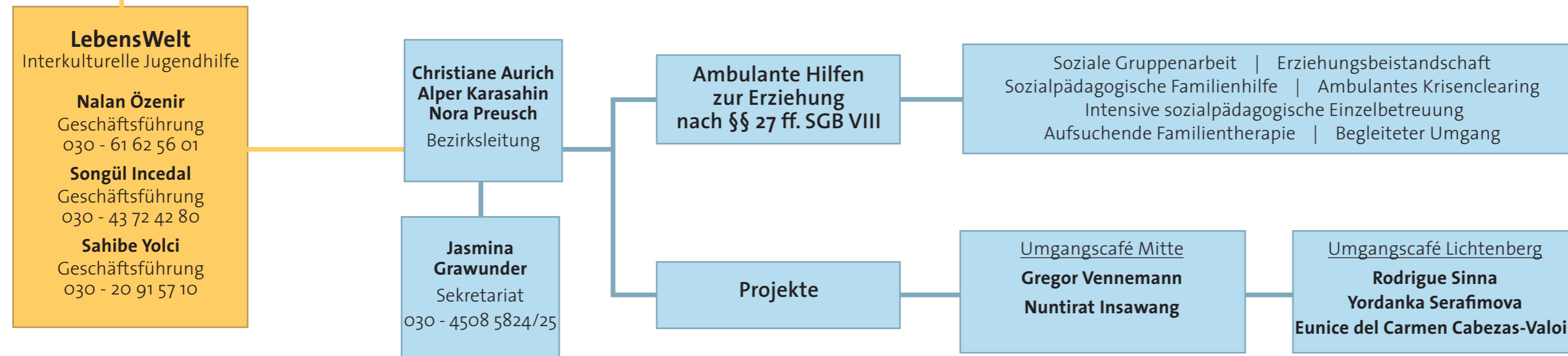
Rhinstr. 84 | 12681 Berlin





Standort Mitte

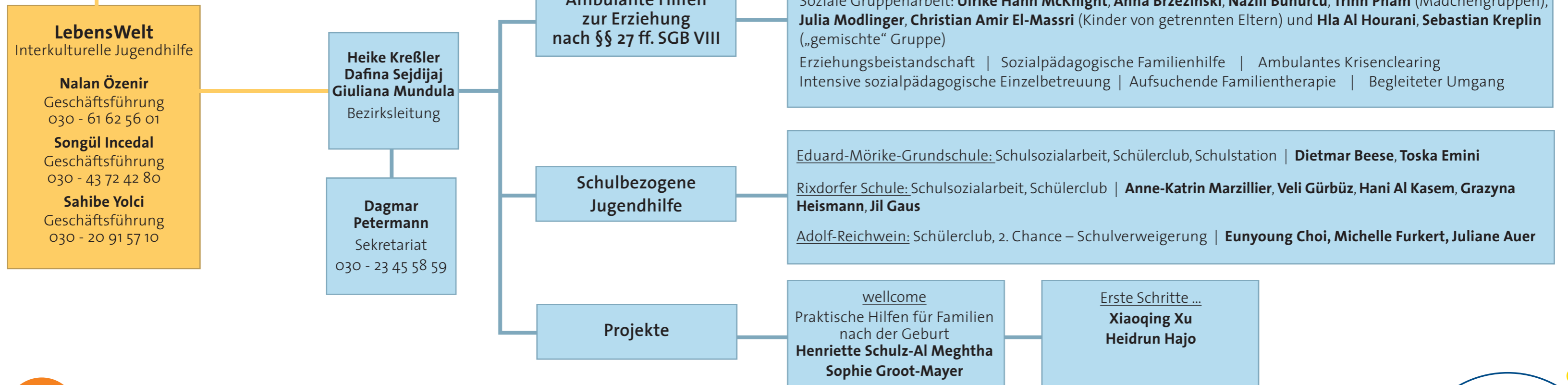
Alt-Moabit 90 | 10559 Berlin





Standort Neukölln

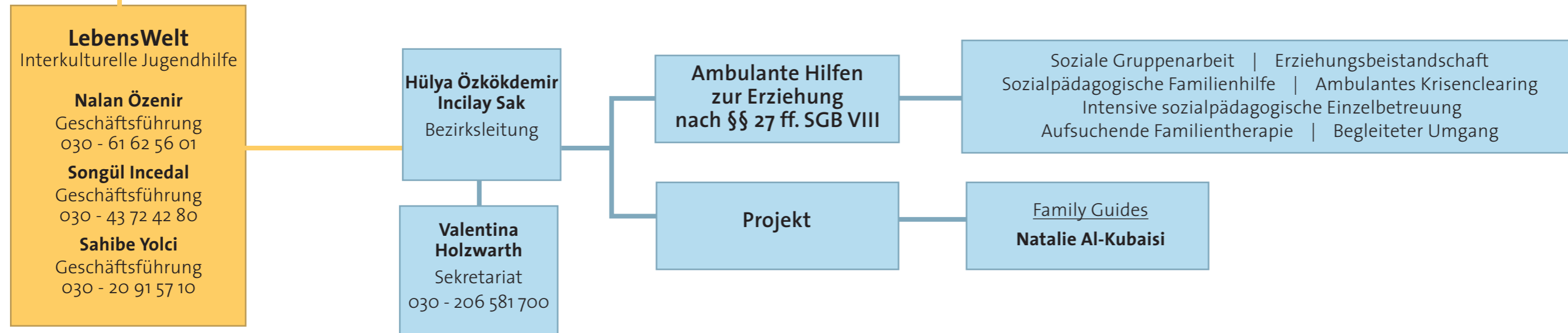
Sonnenallee 90 | 12045 Berlin





Standort Pankow

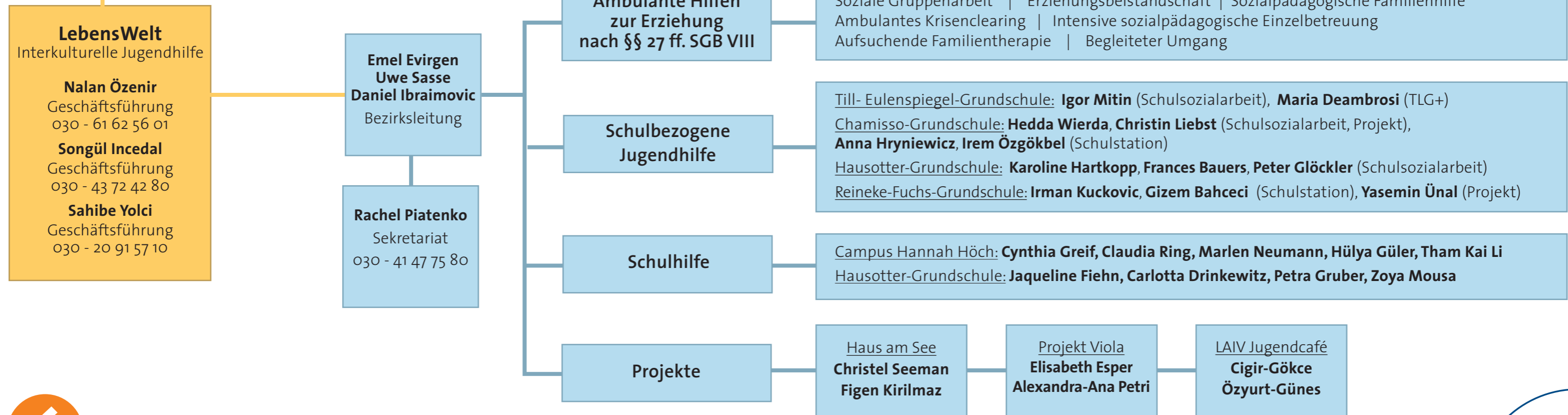
Schönhauser Allee 118 | 10437 Berlin





Standort Reinickendorf

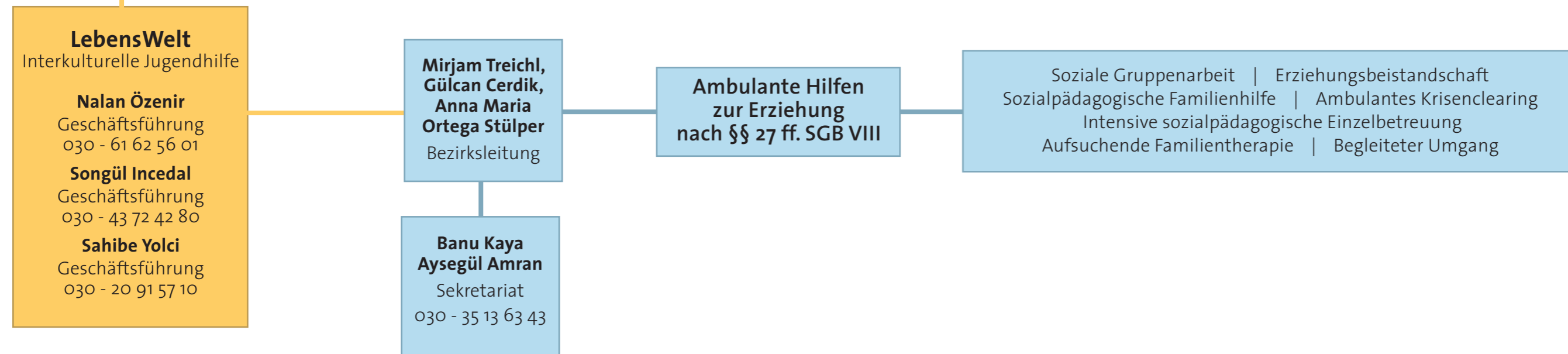
Klixstr. 27 | 13403 Berlin





Standort Spandau

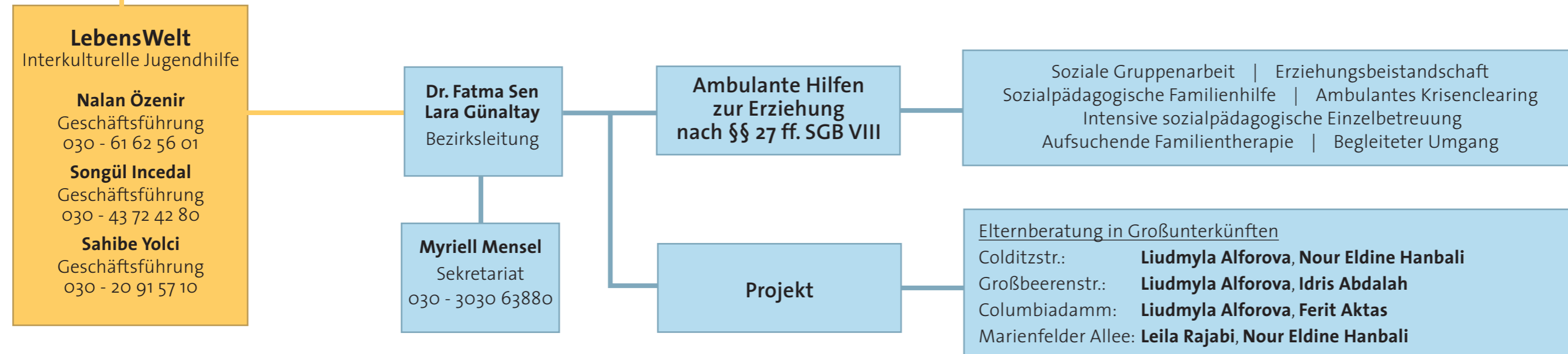
Charlottenstr. 4 | 13597 Berlin





Standort Tempelhof-Schöneberg

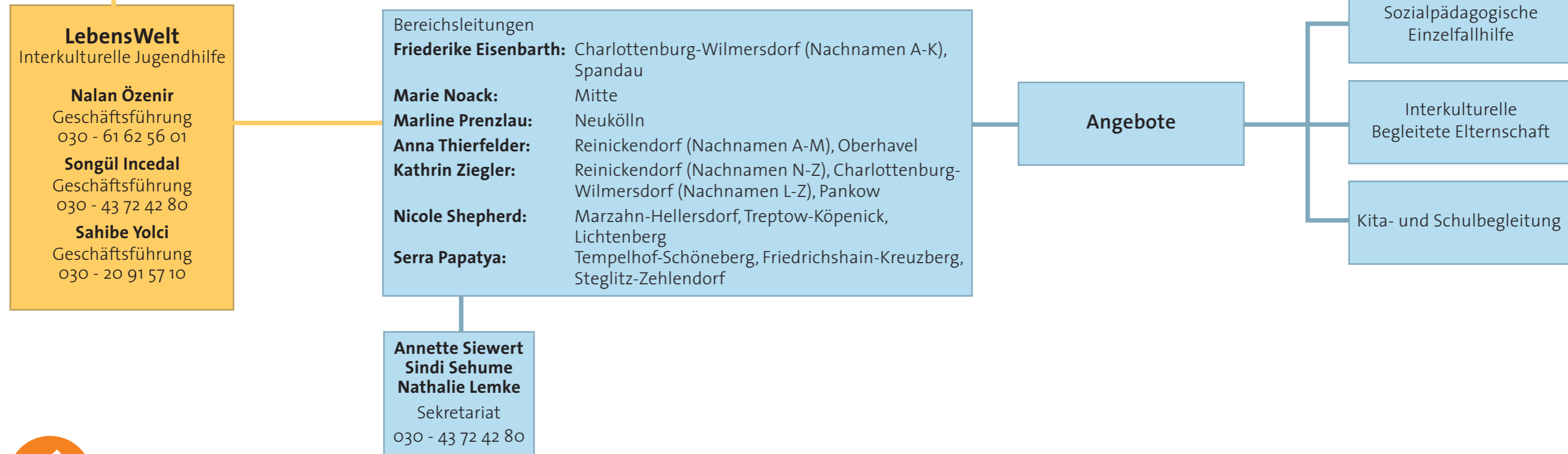
Hauptstr. 117 | 10437 Berlin





Eingliederungsförderung

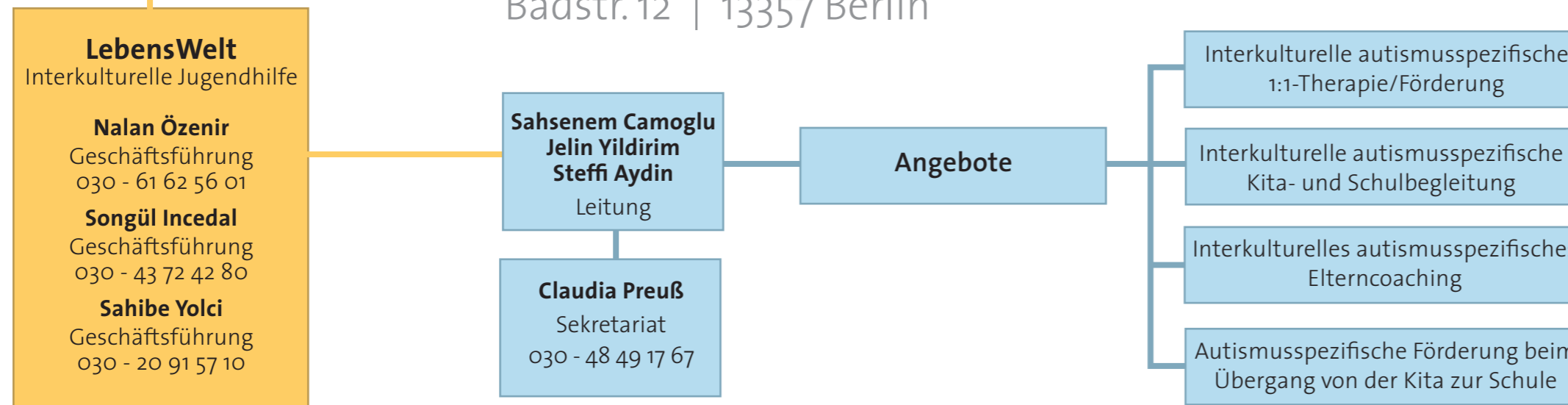
Ollenhauerstr. 127 | 13403 Berlin





Interkulturelles Autismus-Zentrum

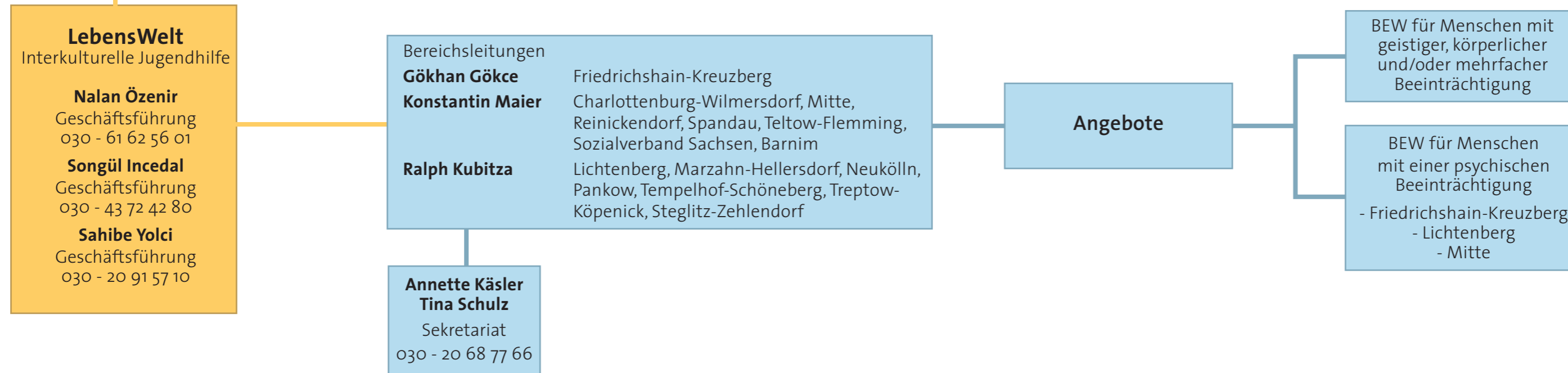
Grüntaler Str. 1 | 13357 Berlin
Badstr. 12 | 13357 Berlin





Betreutes Einzelwohnen

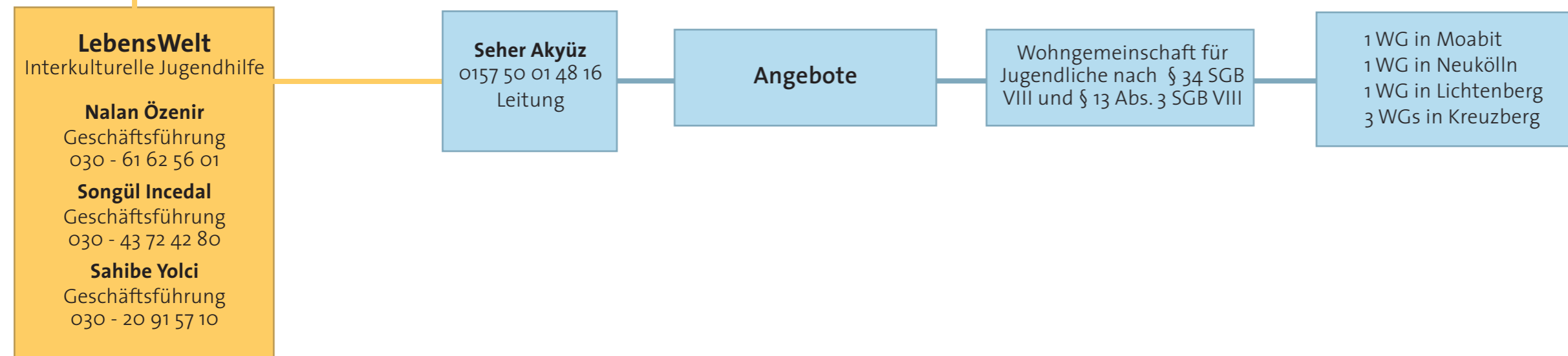
Stromstr. 39 | 10551 Berlin

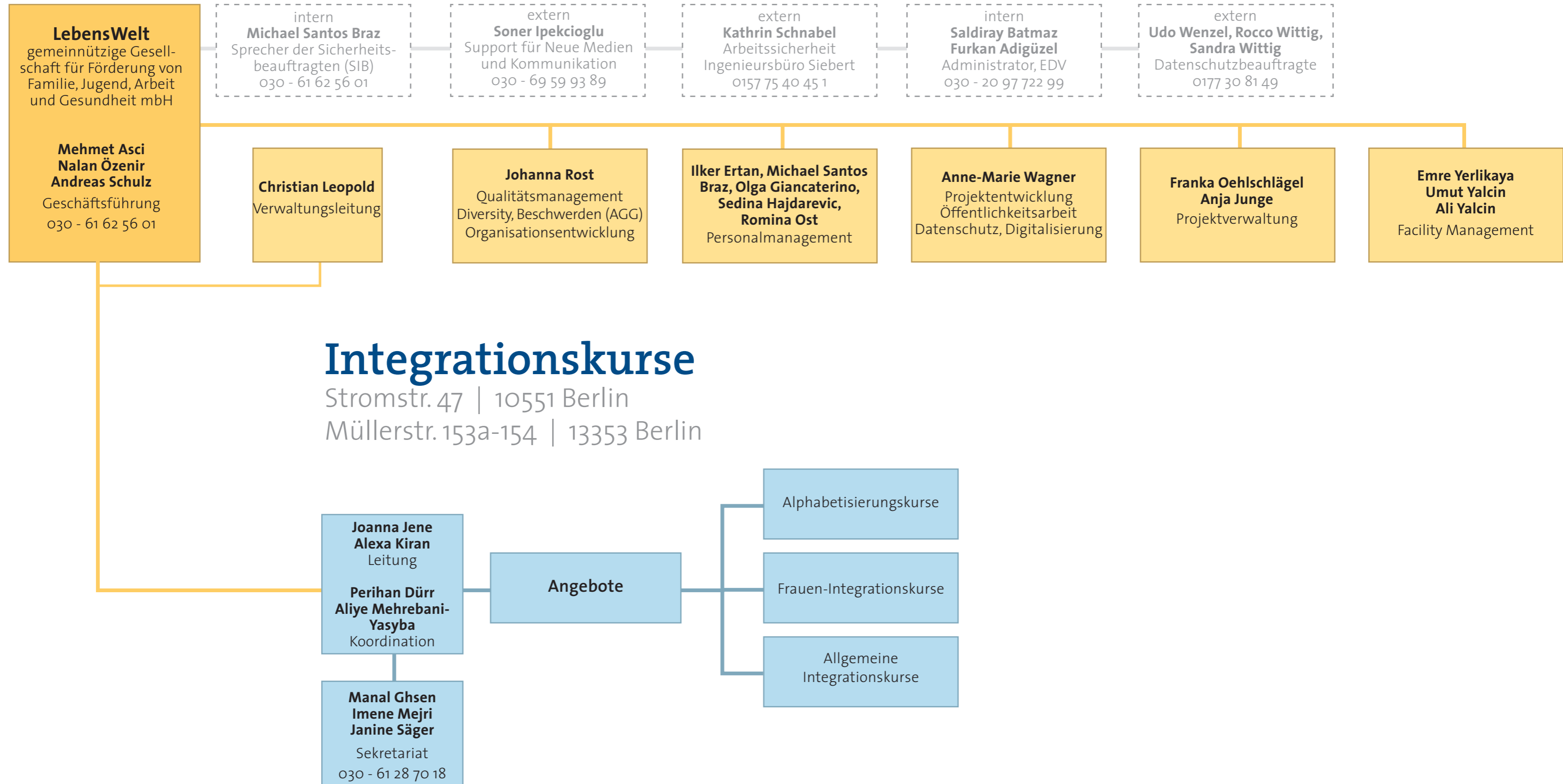




Stationäre Hilfen

Tempelhofer Ufer 16 | 10963 Berlin







LebensWelt Organigramm 2024



Facility Management

Ollenhauerstr. 127 | 13403 Berlin

